

RAPID CITY AREA

[📍](#) [📞 \(605\) 394-4031](#) [ABOUT THE DISTRICT](#) [FAQ](#)

The district report card highlights key performance areas that are aligned to South Dakota's school accountability system along with our district's vision, mission, and goals set forth by the superintendent working with the Board of Education for ensuring that all students are "on-track" to graduate high school and are prepared to pursue their life goals, enrolling in college or achieving their career aspirations.

ACADEMICS

SCHOOL QUALITY

OVERALL SCORE

STUDENT PERFORMANCE | STUDENT PROGRESS | HIGH SCHOOL COMPLETION | COLLEGE AND CAREER READINESS | ENGLISH LANGUAGE LEARNERS PROGRESS

EDUCATOR QUALIFICATIONS | SCHOOL ENVIRONMENT | SCHOOL SAFETY

STUDENT PERFORMANCE

South Dakota's students take the annual state assessments for the subjects of English language arts and mathematics in grades 3-8 and 11, and science in grades 5, 8 and 11. Student Performance measures how well the students performed on the state assessments.



English Language Arts

50%

Mathematics

44%

Science

44%

STUDENT PROGRESS

This measure shows the progress students have made on the state assessments for English language arts and mathematics since the prior school year. It illustrates whether students are learning and improving.



English Language Arts

55%

Mathematics

50%

English Learners On Track

33%

ATTENDANCE AND GRADUATION

Attending school regularly is essential for students to progress through each level of their education. Attendance rate is measured for elementary and middle schools. At the high school level, graduation rate and college and career readiness are important indicators of students' readiness to pursue higher education, career, and life beyond high school.



Attendance Rate

90%

High School Completion

86%

College & Career Readiness

32%

EDUCATION SPENDING

South Dakota provides the tools for our schools to meet all their financial needs to provide a quality education to all our students. The numbers below provide information about some of the financial details for the district.



Per Pupil Spending

Federal Funding

State and Local Funding

South Dakota will report financial information in future report cards.



RAPID CITY AREA



(605) 394-4031

ABOUT THE DISTRICT

FAQ

The district report card highlights key performance areas that are aligned to South Dakota's school accountability system along with our district's vision, mission, and goals set forth by the superintendent working with the Board of Education for ensuring that all students are "on-track" to graduate high school and are prepared to pursue their life goals, enrolling in college or achieving their career aspirations.

ACADEMICS

SCHOOL QUALITY

OVERALL SCORE

STUDENT PERFORMANCE

STUDENT PROGRESS

HIGH SCHOOL COMPLETION

COLLEGE AND CAREER READINESS

ENGLISH LANGUAGE LEARNERS PROGRESS

EDUCATOR QUALIFICATIONS

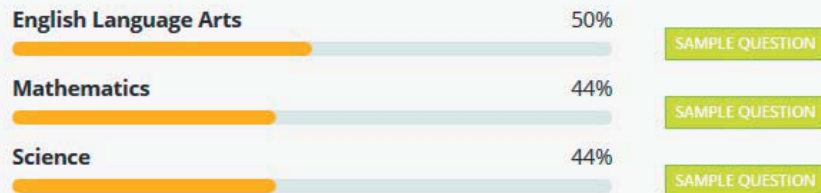
SCHOOL ENVIRONMENT

SCHOOL SAFETY

HOW DID STUDENTS PERFORM IN EACH SUBJECT?



Students take the annual state assessments for English language arts and mathematics in grades 3-8 and 11, and science in grades 5, 8, and 11. These tests measure the concepts and skills taught in the classroom and whether students met the state's grade-level expectations in each subject. The graphs below show the percentage of students who met or exceeded the expectations on the state assessment in each subject.



HOW DOES MY CHILD'S DISTRICT COMPARE TO THE STATE?

ENGLISH LANGUAGE ARTS



MATHEMATICS



SCIENCE



PERFORMANCE BY STUDENT POPULATION

The information below shows how each population of students performed. It is broken down by group to show whether or not a school is serving all of its students well. When there are gaps for certain groups of students, schools will use that information to understand how they can better serve those groups to ensure that all students are performing at grade level.

English Language Arts

VIEW DETAILS

All Students	50%	7087 Students
Female	55%	3500 Students
Male	45%	3587 Students
American Indian/Alaska Native	24%	1218 Students
Asian	73%	70 Students
Black/African American	40%	60 Students
Hispanic/Latino	42%	559 Students
Native Hawaiian/Pacific Islander	*	* Students
Two or More Races	42%	630 Students
White/Caucasian	59%	4549 Students
Economically Disadvantaged	33%	3282 Students
English Learners	31%	48 Students
Foster Care	17%	90 Students
Homeless	19%	160 Students
Migrant	*	* Students
Military Connected	63%	147 Students
Students with Disabilities	15%	992 Students

* Data is not shown to prevent the identification of individuals in a small group.

PERFORMANCE BY STUDENT POPULATION

The information below shows how each population of students performed. It is broken down by group to show whether or not a school is serving all of its students well. When there are gaps for certain groups of students, schools will use that information to understand how they can better serve those groups to ensure that all students are performing at grade level.

Mathematics

VIEW DETAILS

All Students	44%	7081 Students
Female	43%	3495 Students
Male	45%	3586 Students
American Indian/Alaska Native	17%	1220 Students
Asian	67%	70 Students
Black/African American	20%	60 Students
Hispanic/Latino	34%	558 Students
Native Hawaiian/Pacific Islander	*	* Students
Two or More Races	35%	627 Students
White/Caucasian	54%	4545 Students
Economically Disadvantaged	27%	3281 Students
English Learners	23%	48 Students
Foster Care	13%	90 Students
Homeless	16%	162 Students
Migrant	*	* Students
Military Connected	61%	147 Students
Students with Disabilities	14%	990 Students

* Data is not shown to prevent the identification of individuals in a small group.

PERFORMANCE BY STUDENT POPULATION

The information below shows how each population of students performed. It is broken down by group to show whether or not a school is serving all of its students well. When there are gaps for certain groups of students, schools will use that information to understand how they can better serve those groups to ensure that all students are performing at grade level.

Science

VIEW DETAILS

All Students	44%	2903 Students
Female	41%	1442 Students
Male	47%	1461 Students
American Indian/Alaska Native	15%	414 Students
Asian	56%	32 Students
Black/African American	16%	32 Students
Hispanic/Latino	34%	206 Students
Native Hawaiian/Pacific Islander	*	* Students
Two or More Races	39%	223 Students
White/Caucasian	52%	1995 Students
Economically Disadvantaged	27%	1166 Students
English Learners	18%	22 Students
Foster Care	12%	33 Students
Homeless	15%	47 Students
Migrant	*	* Students
Military Connected	76%	41 Students
Students with Disabilities	16%	366 Students

* Data is not shown to prevent the identification of individuals in a small group.

RAPID CITY AREA

📍 (605) 394-4031 ABOUT THE DISTRICT FAQ

The district report card highlights key performance areas that are aligned to South Dakota's school accountability system along with our district's vision, mission, and goals set forth by the superintendent working with the Board of Education for ensuring that all students are "on-track" to graduate high school and are prepared to pursue their life goals, enrolling in college or achieving their career aspirations.

ACADEMICS

SCHOOL QUALITY

OVERALL SCORE

STUDENT PERFORMANCE

STUDENT PROGRESS

HIGH SCHOOL COMPLETION

COLLEGE AND CAREER READINESS

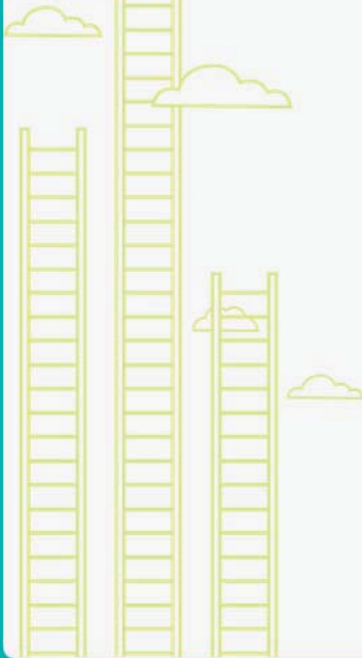
ENGLISH LANGUAGE LEARNERS PROGRESS

EDUCATOR QUALIFICATIONS

SCHOOL ENVIRONMENT

SCHOOL SAFETY

HOW MUCH DID STUDENTS IMPROVE ON THE STATE TEST OVER 3 YEARS?

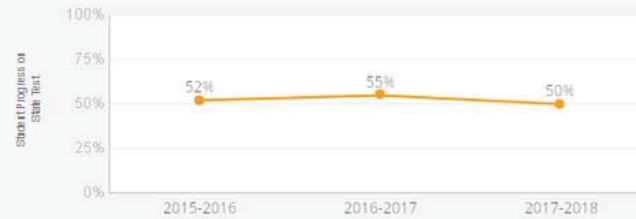


This measure shows the progress students have made on the state assessments for English language arts and mathematics since the prior school year. It illustrates whether students are learning and improving.

ENGLISH LANGUAGE ARTS

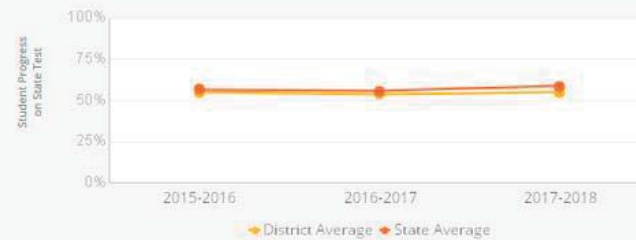


MATHEMATICS

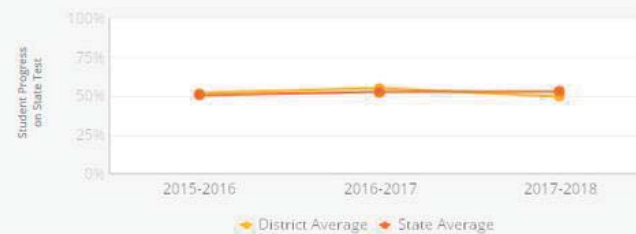


HOW DOES MY CHILD'S DISTRICT COMPARE TO THE STATE?

ENGLISH LANGUAGE ARTS



MATHEMATICS



PROGRESS BY STUDENT POPULATION

The information below shows how each population of students performed. It is broken down by group to show whether or not a school is serving all of its students well. When there are gaps for certain groups of students, schools will use that information to understand how they can better serve those groups to ensure that all students are performing at grade level.

English Language Arts

VIEW DETAILS

All Students	55%	5049 Students
Female	61%	2465 Students
Male	49%	2584 Students
American Indian/Alaska Native	37%	868 Students
Asian	82%	44 Students
Black/African American	58%	38 Students
Hispanic/Latino	49%	408 Students
Native Hawaiian/Pacific Islander	*	* Students
Two or More Races	50%	489 Students
White/Caucasian	61%	3202 Students
Economically Disadvantaged	43%	2419 Students
English Learners	52%	31 Students
Foster Care	*	* Students
Homeless	25%	105 Students
Migrant	*	* Students
Military Connected	*	* Students
Students with Disabilities	31%	778 Students

* Data is not shown to prevent the identification of individuals in a small group.

PROGRESS BY STUDENT POPULATION

The information below shows how each population of students performed. It is broken down by group to show whether or not a school is serving all of its students well. When there are gaps for certain groups of students, schools will use that information to understand how they can better serve those groups to ensure that all students are performing at grade level.

Mathematics

VIEW DETAILS

All Students	50%	5040 Students
Female	49%	2459 Students
Male	51%	2581 Students
American Indian/Alaska Native	30%	868 Students
Asian	78%	45 Students
Black/African American	29%	38 Students
Hispanic/Latino	43%	407 Students
Native Hawaiian/Pacific Islander	*	* Students
Two or More Races	45%	487 Students
White/Caucasian	57%	3195 Students
Economically Disadvantaged	37%	2411 Students
English Learners	47%	32 Students
Foster Care	*	* Students
Homeless	25%	106 Students
Migrant	*	* Students
Military Connected	*	* Students
Students with Disabilities	34%	775 Students

* Data is not shown to prevent the identification of individuals in a small group.



The district report card is just one piece of information, that when combined with a student's individual state test results, and report card grades, gives parents a more accurate picture of their children's academic experience.

RAPID CITY AREA

 (605) 394-4031
 [ABOUT THE DISTRICT](#)
[FAQ](#)

The district report card highlights key performance areas that are aligned to South Dakota's school accountability system along with our district's vision, mission, and goals set forth by the superintendent working with the Board of Education for ensuring that all students are "on-track" to graduate high school and are prepared to pursue their life goals, enrolling in college or achieving their career aspirations.

ACADEMICS

SCHOOL QUALITY

OVERALL SCORE

STUDENT PERFORMANCE

STUDENT PROGRESS

HIGH SCHOOL COMPLETION

COLLEGE AND CAREER READINESS

ENGLISH LANGUAGE LEARNERS PROGRESS

EDUCATOR QUALIFICATIONS

SCHOOL ENVIRONMENT

SCHOOL SAFETY

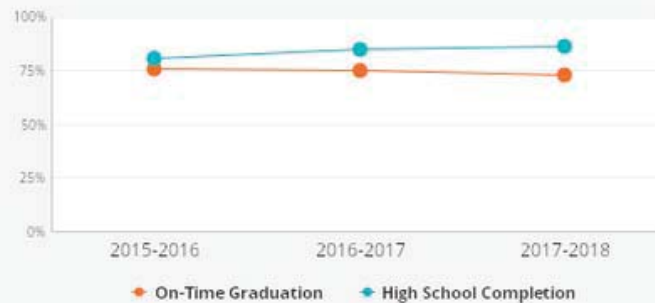
HOW MANY STUDENTS COMPLETE HIGH SCHOOL?



The percentage of students who graduate within four years of entering high school is compared to the percentage of students who graduate with a diploma or high school equivalent by the age of 21.



HOW DID THIS DISTRICT PERFORM OVER THE LAST THREE YEARS?



HOW DOES MY CHILD'S DISTRICT COMPARE TO THE STATE?

ON-TIME GRADUATION



HIGH SCHOOL COMPLETION



PERFORMANCE BY STUDENT POPULATION

The information below shows how each population of students performed. It is broken down by group to show whether or not a school is serving all of its students well. When there are gaps for certain groups of students, schools will use that information to understand how they can better serve those groups to ensure that all students complete high school.

High School Completion

VIEW DETAILS

All Students	86%	918 Students
Female	88%	416 Students
Male	85%	502 Students
American Indian/Alaska Native	56%	132 Students
Asian	92%	13 Students
Black/African American	*	* Students
Hispanic/Latino	80%	44 Students
Native Hawaiian/Pacific Islander	*	* Students
Two or More Races	92%	36 Students
White/Caucasian	92%	686 Students
Economically Disadvantaged	74%	176 Students
English Learners	*	* Students
Foster Care	*	* Students
Homeless	68%	22 Students
Migrant	*	* Students
Military Connected	*	* Students
Students with Disabilities	81%	73 Students

* Data is not shown to prevent the identification of individuals in a small group.

PERFORMANCE BY STUDENT POPULATION

The information below shows how each population of students performed. It is broken down by group to show whether or not a school is serving all of its students well. When there are gaps for certain groups of students, schools will use that information to understand how they can better serve those groups to ensure that all students complete high school.

On-Time Graduation

VIEW DETAILS

All Students	73%	1022 Students
Female	75%	457 Students
Male	70%	565 Students
American Indian/Alaska Native	37%	179 Students
Asian	91%	11 Students
Black/African American	*	* Students
Hispanic/Latino	60%	48 Students
Native Hawaiian/Pacific Islander	*	* Students
Two or More Races	74%	42 Students
White/Caucasian	82%	734 Students
Economically Disadvantaged	48%	233 Students
English Learners	*	* Students
Foster Care	*	* Students
Homeless	43%	23 Students
Migrant	*	* Students
Military Connected	*	* Students
Students with Disabilities	57%	77 Students

* Data is not shown to prevent the identification of individuals in a small group.



The district report card is just one piece of information, that when combined with a student's individual state test results, and report card grades, gives parents a more accurate picture of their children's academic experience.

RAPID CITY AREA

The district report card highlights key performance areas that are aligned to South Dakota's school accountability system along with our district's vision, mission, and goals set forth by the superintendent working with the Board of Education for ensuring that all students are "on-track" to graduate high school and are prepared to pursue their life goals, enrolling in college or achieving their career aspirations.

ACADEMICS

SCHOOL QUALITY

OVERALL SCORE

STUDENT PERFORMANCE

STUDENT PROGRESS

HIGH SCHOOL COMPLETION

COLLEGE AND CAREER READINESS

ENGLISH LANGUAGE LEARNERS PROGRESS

EDUCATOR QUALIFICATIONS

SCHOOL ENVIRONMENT

SCHOOL SAFETY

HOW MANY GRADUATES GO ON TO HIGHER EDUCATION?

The higher education enrollment data in the graphs below are provided by the National Student Clearinghouse, which is the nation's trusted source for degree verification and enrollment verification and student educational outcomes research.

Higher Education Students

63%

Public In-State 45%

Private In-State 3%

Out-of-State 15%

[VIEW DETAILS](#)

WHICH COLLEGES DO GRADUATES PREFER?

The data in this section showcase the top four higher education institutions where graduates enrolled after high school and the average ACT score for the state.

Institution

- BLACK HILLS STATE UNIVERSITY
- WESTERN DAKOTA TECHNICAL INSTITUTE
- SOUTH DAKOTA STATE UNIVERSITY
- UNIVERSITY OF SOUTH DAKOTA

District

Average ACT Score

22

State

Average ACT Score

22

ARE STUDENTS PREPARED FOR COLLEGE AND CAREER?

South Dakota has made it a priority for all students to graduate prepared for life after high school. The College and Career Readiness measure describes the percentage of students who are fully prepared for postsecondary education and the workforce.

College Coursework Readiness 42%

Assessment Readiness 52%

College and Career Readiness 32%

HOW DOES MY CHILD'S DISTRICT COMPARE TO THE STATE?

COLLEGE COURSEWORK READINESS



ASSESSMENT READINESS



COLLEGE AND CAREER READINESS



PERFORMANCE BY STUDENT POPULATION

The information below shows how each population of students performed. It is broken down by group to show whether or not a school is serving all of its students well. When there are gaps for certain groups of students, schools will use that information to understand how they can better serve those groups to ensure that all students are ready for college, career, and life.

College and Career Readiness ▾

VIEW DETAILS

All Students	32%	974 Students
Female	35%	467 Students
Male	30%	507 Students
American Indian/Alaska Native	9%	143 Students
Asian	*	* Students
Black/African American	20%	15 Students
Hispanic/Latino	31%	49 Students
Native Hawaiian/Pacific Islander	*	* Students
Two or More Races	22%	37 Students
White/Caucasian	38%	722 Students
Economically Disadvantaged	18%	251 Students
English Learners	*	* Students
Foster Care	*	* Students
Homeless	*	* Students
Migrant	*	* Students
Military Connected	*	* Students
Students with Disabilities	*	* Students

* Data is not shown to prevent the identification of individuals in a small group.



The district report card is just one piece of information, that when combined with a student's individual state test results, and report card grades, gives parents a more accurate picture of their children's academic experience.

◀ BACK: HIGH SCHOOL COMPLETION

NEXT: ENGLISH LANGUAGE LEARNERS PROGRESS ▶

RAPID CITY AREA

[📍 \(605\) 394-4031](#)
[ABOUT THE DISTRICT](#)
[FAQ](#)

The district report card highlights key performance areas that are aligned to South Dakota's school accountability system along with our district's vision, mission, and goals set forth by the superintendent working with the Board of Education for ensuring that all students are "on-track" to graduate high school and are prepared to pursue their life goals, enrolling in college or achieving their career aspirations.

ACADEMICS

SCHOOL QUALITY

OVERALL SCORE

STUDENT PERFORMANCE

STUDENT PROGRESS

HIGH SCHOOL COMPLETION

COLLEGE AND CAREER READINESS

ENGLISH LANGUAGE LEARNERS PROGRESS

EDUCATOR QUALIFICATIONS

SCHOOL ENVIRONMENT

SCHOOL SAFETY

WHAT PERCENTAGE OF ENGLISH LEARNERS HAVE MET EXPECTATIONS?

South Dakota's objective is to help English Learner students attain language mastery within five years of entering an English Learner program. The measure below shows the percentage of English Learner students who are improving from year to year, based on their ACCESS 2.0 scores and those who have exited the program. District data are being shown when schools have less than 10 English Learner students.

English Learners On Track 33%

English Learners Exited 3%

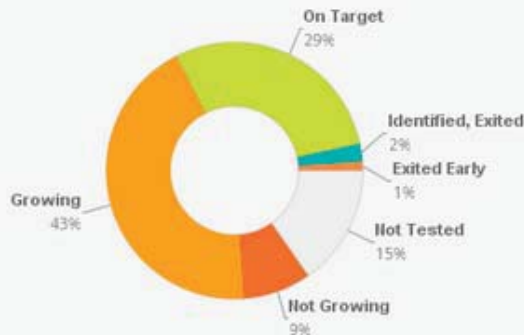


ARE STUDENTS ON TRACK TO LEARN ENGLISH WITHIN FIVE YEARS?

The graphic below illustrates how students are progressing in their language mastery. The number of English Learner students is based upon enrollment data published by the South Dakota Department of Education in the fall of each new school year.

English Learner Students

91



[VIEW TIMELINE](#)

[VIEW DETAILS](#)



The district report card is just one piece of information, that when combined with a student's individual state test results, and report card grades, gives parents a more accurate picture of their children's academic experience.

◀ BACK: COLLEGE AND CAREER READINESS

NEXT: EDUCATOR QUALIFICATIONS ▶

RAPID CITY AREA

(605) 394-4031 ABOUT THE DISTRICT FAQ

The district report card highlights key performance areas that are aligned to South Dakota's school accountability system along with our district's vision, mission, and goals set forth by the superintendent working with the Board of Education for ensuring that all students are "on-track" to graduate high school and are prepared to pursue their life goals, enrolling in college or achieving their career aspirations.

ACADEMICS

SCHOOL QUALITY

OVERALL SCORE

STUDENT PERFORMANCE

STUDENT PROGRESS

HIGH SCHOOL COMPLETION

COLLEGE AND CAREER READINESS

ENGLISH LANGUAGE LEARNERS PROGRESS

EDUCATOR QUALIFICATIONS

SCHOOL ENVIRONMENT

SCHOOL SAFETY

HOW QUALIFIED ARE EDUCATORS AT THIS DISTRICT?

Teachers and administrators play a critical role in determining school and student success. This measure provides information about the qualifications of educators in your district.

Teachers

Teachers

852.07

Administrators

46.67

Provisional or Temporary Certification 0%

No Certification 0%

Teaching out-of-field 2%

Three or less years experience 15%

Three or less years and out-of-field 1%

Alternative Certification or Educator Permit 0%

Note: Teachers and administrators assigned to more than one school or more than one job are counted proportionately.

HOW QUALIFIED ARE EDUCATORS AT THIS DISTRICT?

Teachers and administrators play a critical role in determining school and student success. This measure provides information about the qualifications of educators in your district.

Administrators

Teachers

852.07

Administrators

46.67

Provisional or Temporary Certification 0%

No Certification 2%

Teaching out-of-field 4%

Three or less years experience 6%

Three or less years and out-of-field 0%

Alternative Certification or Educator Permit 0%

Note: Administrators include school principals, assistant principals, district superintendents, assistant superintendents and other district leaders. Administrators with multiple jobs are counted proportionately.

HOW DOES MY CHILD'S DISTRICT COMPARE TO THE STATE?

Teachers

PROVISIONAL OR TEMPORARY CERTIFICATION

District Average 0%

State Average 1%

NO CERTIFICATION

District Average 0%

State Average 0%

TEACHING OUT OF FIELD

District Average 2%

State Average 2%

THREE OR LESS YEARS EXPERIENCE

District Average 15%

State Average 15%

THREE OR LESS YEARS AND OUT-OF-FIELD

District Average 1%

State Average 1%

ALTERNATIVE CERTIFICATION OR EDUCATOR PERMIT

District Average 0%

State Average 1%

HOW DOES MY CHILD'S DISTRICT COMPARE TO THE STATE?

Administrators

PROVISIONAL OR TEMPORARY CERTIFICATION

District Average 0%

State Average 0%

NO CERTIFICATION

District Average 2%

State Average 1%

TEACHING OUT OF FIELD

District Average 4%

State Average 3%

THREE OR LESS YEARS EXPERIENCE

District Average 6%

State Average 14%

THREE OR LESS YEARS AND OUT-OF-FIELD

District Average 0%

State Average 2%

ALTERNATIVE CERTIFICATION OR EDUCATOR PERMIT

District Average 0%

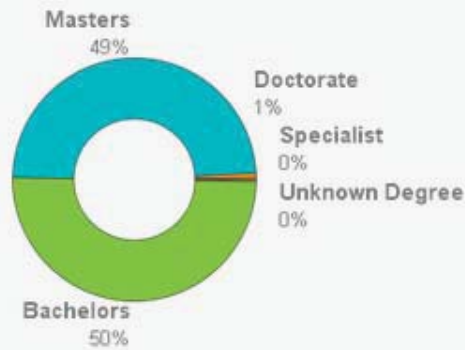
State Average 0%

WHAT IS THE HIGHEST DEGREE EARNED BY EDUCATORS IN THIS DISTRICT?

South Dakota is committed to ensuring that we have the most qualified educators teaching our students. The graphic below illustrates the level of degrees held by educators in the state.

Teachers

[VIEW DETAILS](#)



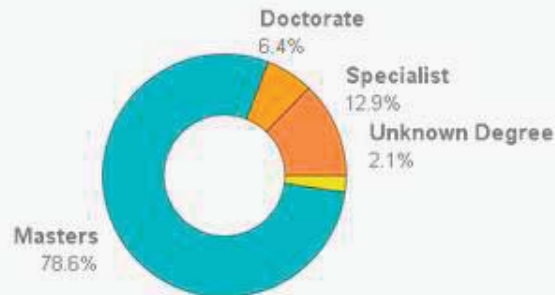
Note: Degrees that are not available are reported as Unknown.

WHAT IS THE HIGHEST DEGREE EARNED BY EDUCATORS IN THIS DISTRICT?

South Dakota is committed to ensuring that we have the most qualified educators teaching our students. The graphic below illustrates the level of degrees held by educators in the state.

Administrators

[VIEW DETAILS](#)



The district report card is just one piece of information, that when combined with a student's individual state test results, and report card grades, gives parents a more accurate picture of their children's academic experience.

[← BACK: ENGLISH LANGUAGE LEARNERS PROGRESS](#)

[NEXT: SCHOOL ENVIRONMENT →](#)

RAPID CITY AREA

 (605) 394-4031
 [ABOUT THE DISTRICT](#)
[FAQ](#)

The district report card highlights key performance areas that are aligned to South Dakota's school accountability system along with our district's vision, mission, and goals set forth by the superintendent working with the Board of Education for ensuring that all students are "on-track" to graduate high school and are prepared to pursue their life goals, enrolling in college or achieving their career aspirations.

ACADEMICS

SCHOOL QUALITY

OVERALL SCORE

STUDENT PERFORMANCE

STUDENT PROGRESS

HIGH SCHOOL COMPLETION

COLLEGE AND CAREER READINESS

ENGLISH LANGUAGE LEARNERS PROGRESS

EDUCATOR QUALIFICATIONS

SCHOOL ENVIRONMENT

SCHOOL SAFETY

ARE STUDENTS ATTENDING SCHOOL?

School Environment includes factors that impact the environment of the school including student attendance. A missed school day is a lost opportunity for students to learn. The information below is provided as another tool to further identify opportunities to improve school attendance for all of South Dakota's students.



HOW DOES MY CHILD'S DISTRICT COMPARE TO THE STATE?

ATTENDANCE



CHRONIC ABSENTEEISM



ATTENDANCE BY STUDENT POPULATION

The information below shows how well each population of students performed. It is broken down by group to show whether or not a school is serving all of its students well. When there are gaps for certain groups of students, schools will use that information to understand how they can better serve those groups to ensure that all students are being motivated to attend school.

Attendance ▾

[VIEW DETAILS](#)

All Students	90%	9716 Students
Female	91%	4744 Students
Male	90%	4972 Students
American Indian/Alaska Native	78%	1875 Students
Asian	97%	98 Students
Black/African American	90%	79 Students
Hispanic/Latino	85%	801 Students
Native Hawaiian/Pacific Islander	*	* Students
Two or More Races	88%	959 Students
White/Caucasian	95%	5900 Students
Economically Disadvantaged	85%	4999 Students
English Learners	95%	58 Students
Foster Care	80%	179 Students
Homeless	59%	319 Students
Migrant	*	* Students
Military Connected	96%	237 Students
Students with Disabilities	85%	1417 Students

* Data is not shown to prevent the identification of individuals in a small group.

ATTENDANCE BY STUDENT POPULATION

The information below shows how well each population of students performed. It is broken down by group to show whether or not a school is serving all of its students well. When there are gaps for certain groups of students, schools will use that information to understand how they can better serve those groups to ensure that all students are being motivated to attend school.

Chronic Absenteeism ▾

SURVEY RESULTS

All Students	18%	15070 Students
Female	18%	7347 Students
Male	18%	7723 Students
American Indian/Alaska Native	37%	3089 Students
Asian	9%	161 Students
Black/African American	17%	155 Students
Hispanic/Latino	23%	1132 Students
Native Hawaiian/Pacific Islander	*	* Students
Two or More Races	19%	1266 Students
White/Caucasian	11%	9258 Students
Economically Disadvantaged	25%	7104 Students
English Learners	17%	121 Students
Foster Care	30%	319 Students
Homeless	50%	631 Students
Migrant	*	* Students
Military Connected	6%	264 Students
Students with Disabilities	20%	1923 Students

* Data is not shown to prevent the identification of individuals in a small group.



The district report card is just one piece of information, that when combined with a student's individual state test results, and report card grades, gives parents a more accurate picture of their children's academic experience.

◀ BACK: EDUCATOR QUALIFICATION

NEXT: SCHOOL SAFETY ▶

RAPID CITY AREA

 (605) 394-4021
 [ABOUT THE DISTRICT](#)
[FAQ](#)

The district report card highlights key performance areas that are aligned to South Dakota's school accountability system along with our district's vision, mission, and goals set forth by the superintendent working with the Board of Education for ensuring that all students are "on-track" to graduate high school and are prepared to pursue their life goals, enrolling in college or achieving their career aspirations.

ACADEMICS

SCHOOL QUALITY

OVERALL SCORE

STUDENT PERFORMANCE

STUDENT PROGRESS

HIGH SCHOOL COMPLETION

COLLEGE AND CAREER READINESS

ENGLISH LANGUAGE LEARNERS PROGRESS

EDUCATOR QUALIFICATIONS

SCHOOL ENVIRONMENT

SCHOOL SAFETY

HOW SAFE ARE SCHOOLS IN THIS DISTRICT?

South Dakota has made it a priority to ensure that our schools are safe learning environments for all students. Every school district is required to provide data to the Civil Rights Data Collection (CRDC), which is a survey mandated by the United States Department of Education's Office for Civil Rights (OCR). The graphs below are intended to provide consistent and reliable information about school safety to parents and the community. The most recent CRDC survey results are from 2015-16.



In-School Suspensions	1287
Out-of-School Suspensions	634
Expulsions	0
Incidents of Violence	8
Law Enforcement Referrals	339
Arrests	176

SCHOOL SAFETY BY STUDENT POPULATION

The information below shows data as reported by school districts in the CRDC survey in 2015-16. The data provided in the graphs represent only those student populations that are represented in the CRDC survey.

In-School Suspensions

All Students	1287
Female	341
Male	946
American Indian/Alaska Native	380
Asian	8
Black/African American	30
Hispanic/Latino	109
Native Hawaiian/Pacific Islander	0
Two or More Races	111
White/Caucasian	649
English Learners	2
Students with Disabilities	358

